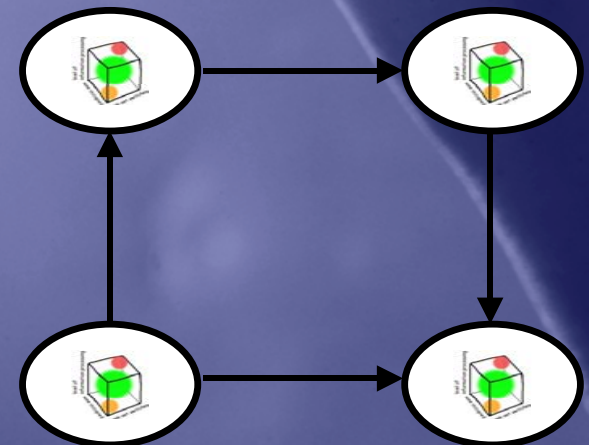
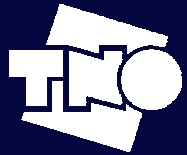


# Managing high-demand situations

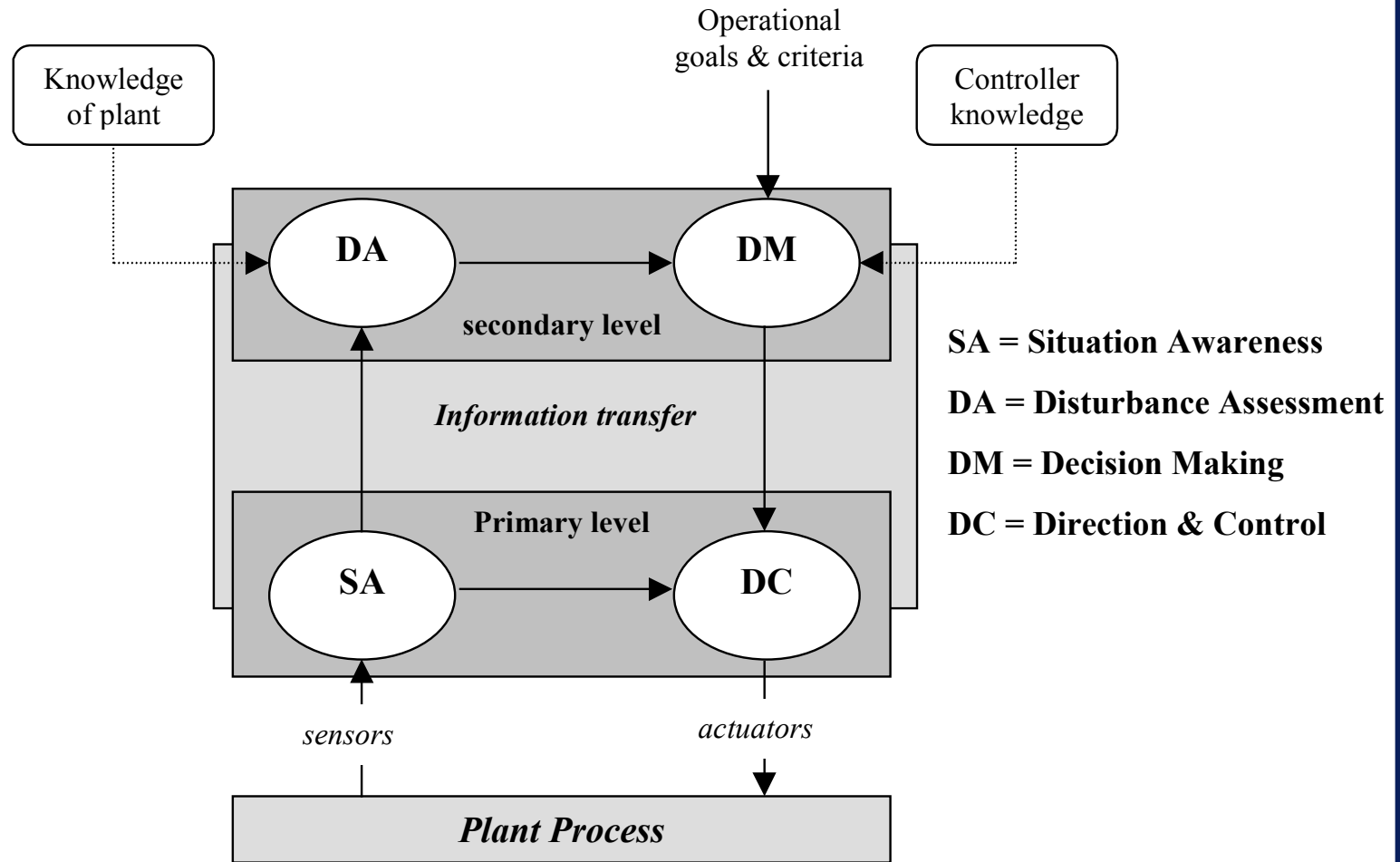
PRISM seminar, Brussels, November 2003



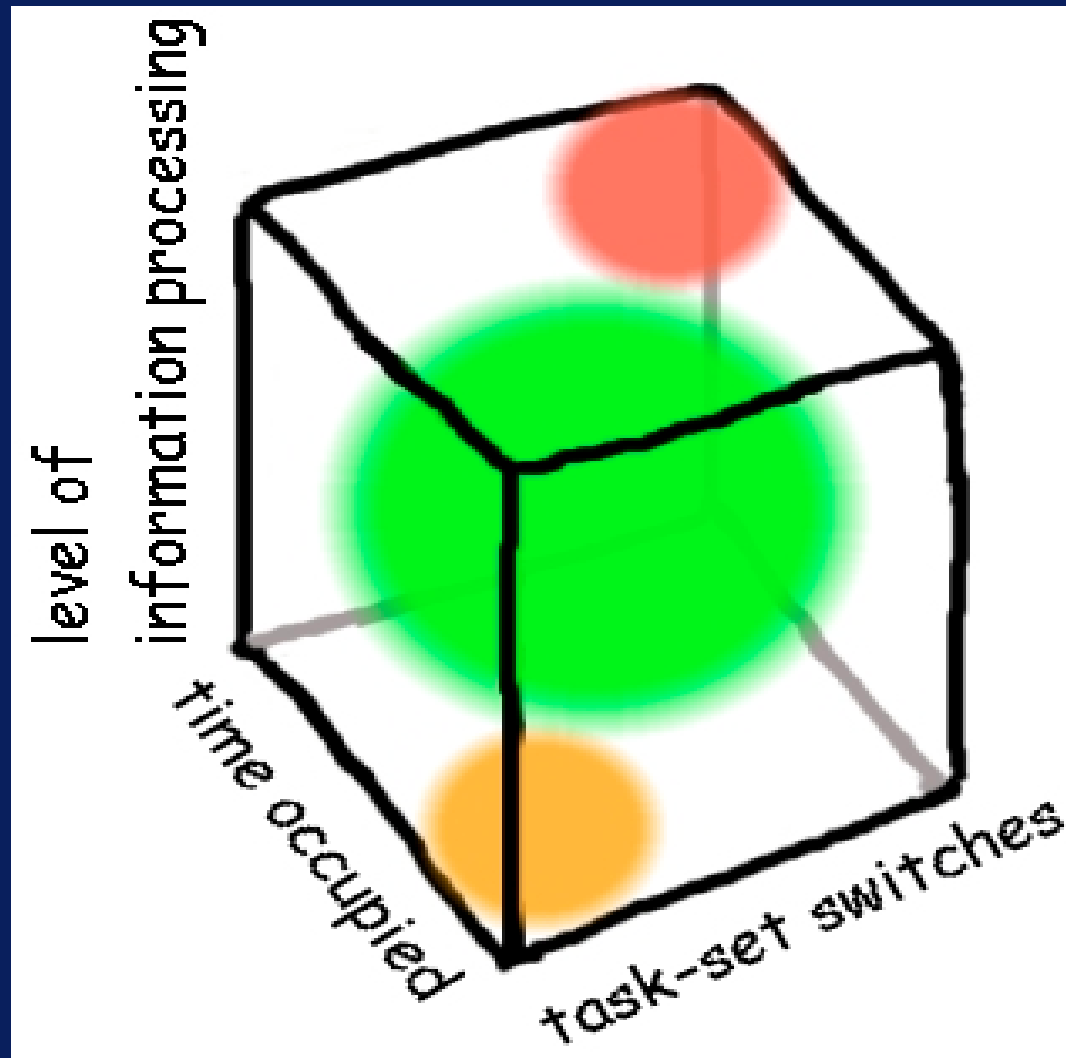
# COLFUN: Cognitive Load FUNctional Framework

- **Functional model**
  - Operator tasks in process control
- **Mental load model**
  - Cognitive task load operator

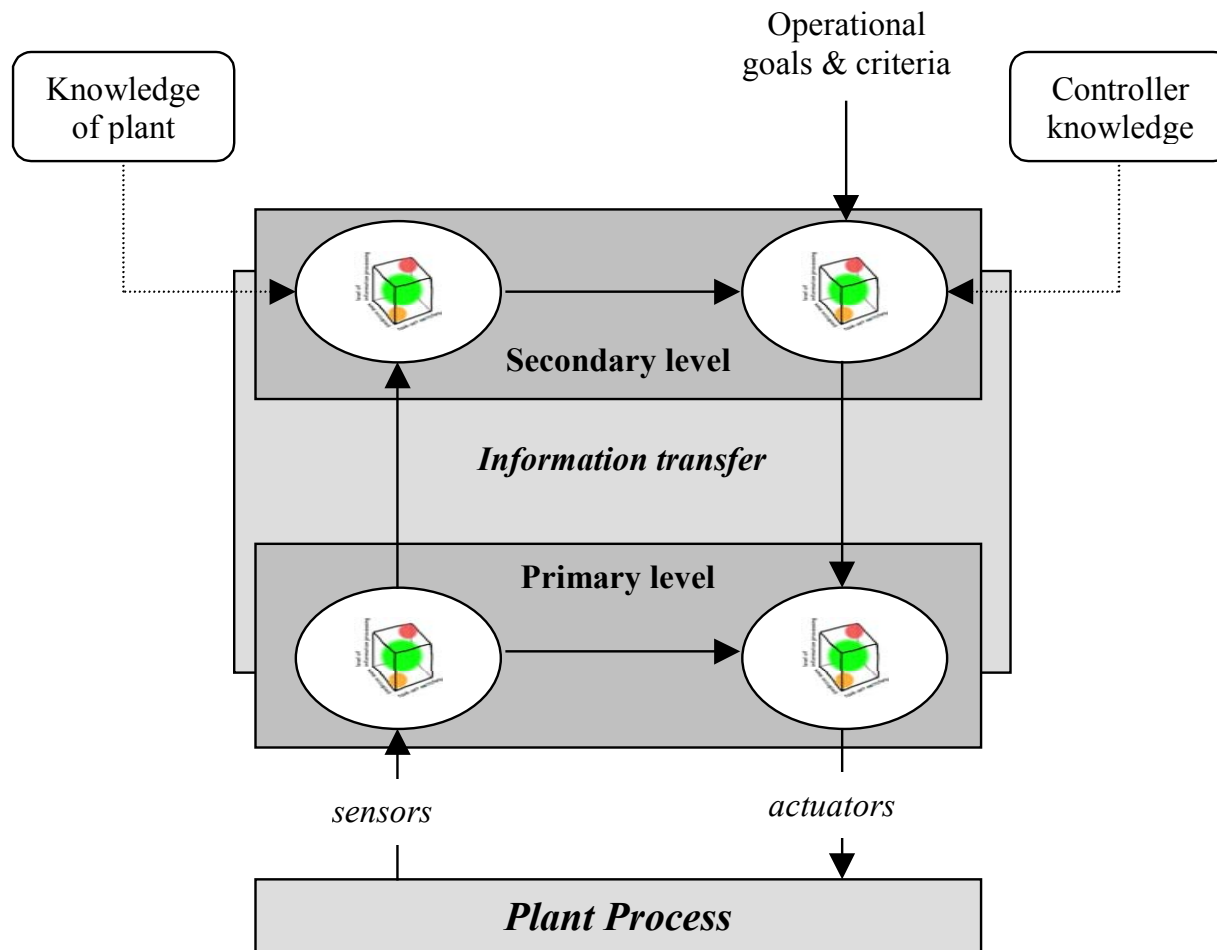
# Functional model



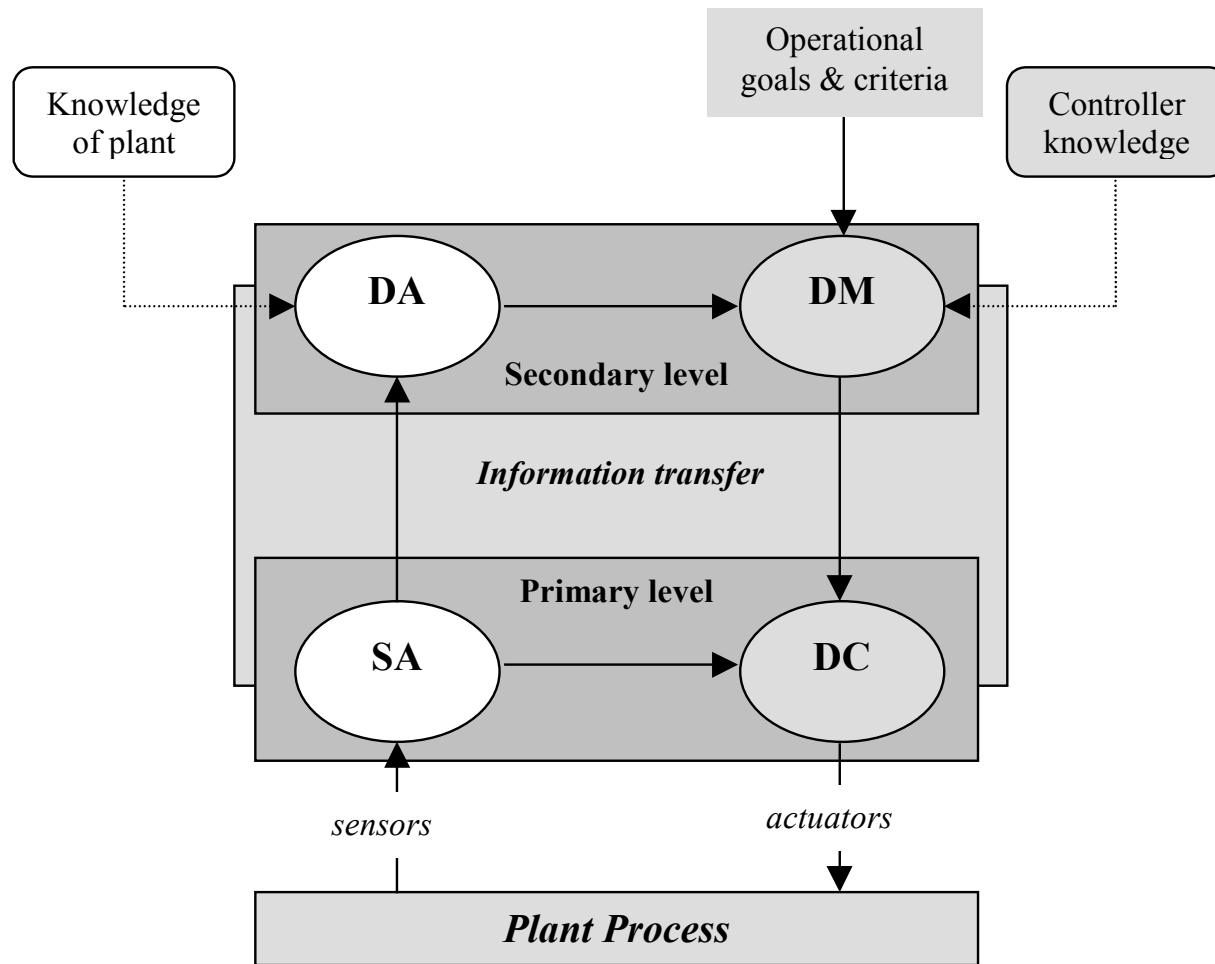
# Mental load model



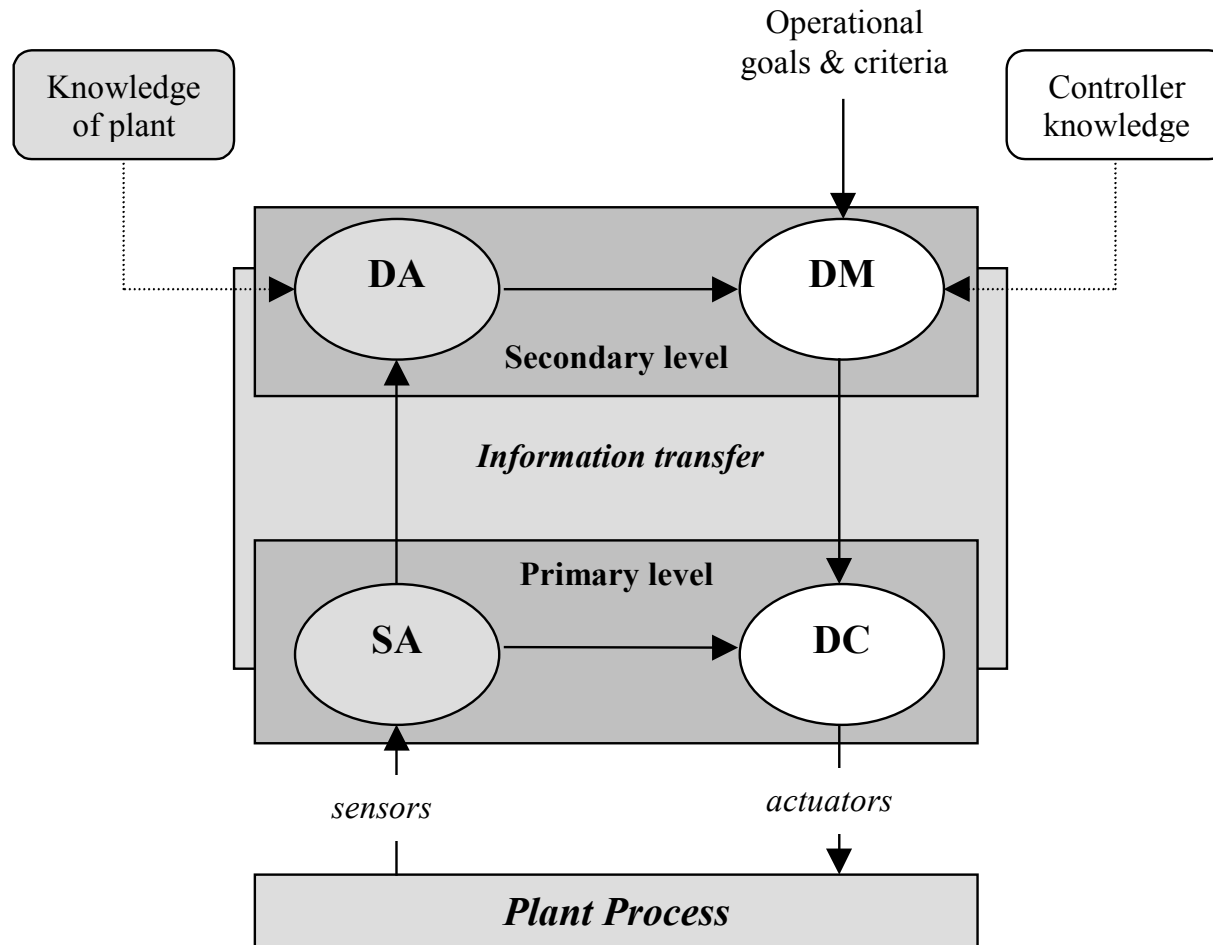
# COLFUN framework



# Seminar 1: Envisioning HD situations



# Seminar 2: Managing HD situations



# **Seminar 2: programme**

## **Day 1**

### **Presentations on:**

**Alarm handling**

**Crisis management**

**Engineering design**

## **Day 2**

### **Workshops to elicit best practices on:**

**Alarm handling**

**Crisis management**

**Engineering design**



## **Seminar 2: results**

**Presentations and results are published on the PRISM web site (December 2003)**

**Best practices are added to the best practice guide, also published on the PRISM web site (January 2004)**